



CALECSE

California Early Childhood
Special Education Network

Community of Practice

Supporting and Monitoring Programs Effectively



CaIECSE

California Early Childhood Special Education Network

Funded by the CDE



Implementation Leadership

Co-Executive Director- Dr. Scott Turner, East San Gabriel Valley SELPA
Co-Executive Director-Melanie Hertig, Irvine Special Education/SELPA
Project Coordinator-Marion Springett, Saddleback Valley USD



CalECSE

California Early Childhood Special Education Network

Funded by the CDE

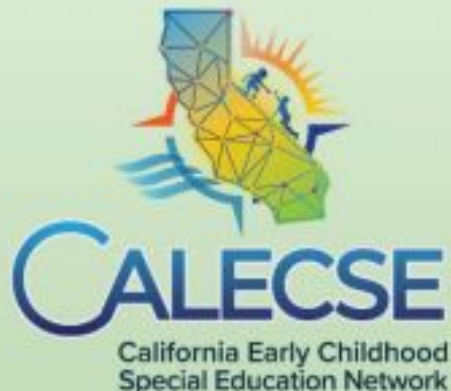
CalECSE.org



CalECSE is a new technical assistance project funded under the California Department of Education (CDE) that will support Local Educational Agencies (LEAs), Special Education Local Plan Area (SELPA)s, County Offices of Special Education (COEs), and other Agency Partners in the areas of IDEA Part C to B Transitions, Preschool Assessment Practices, and Preschool Child Find by providing technical assistance, professional learning, and demonstration of tangible practices *that have been proven successful*.

The CalECSE Network will *leverage collaboration amongst agencies, disseminate resources, highlight existing exemplar practices, and provide direct technical assistance* to improve the capacity, knowledge, collaboration, and implementation of evidence-based practices across agencies throughout California.

The CalECSE Network is committed to *improving outcomes* for children and their families by *eliminating and addressing barriers* to successful transition for California's youngest children with disabilities.



CALECSE Network



SELPA Leadership
(ESGV SELPA and
Irvine USD/SELPA)

CALECSE
Coordinator(s)

Interagency
Collaboration
Exemplar(s)

Innovative and
Inclusive Practices
Exemplar(s)

Assessment Practices
Exemplar(s)

Assessment Team
Leadership
Exemplar(s)

Preschool Child Find
Exemplar(s)

Parent Outreach &
Support Exemplar(s)

Data Governance
Exemplar(s)

Geographic Technical Assistance Facilitators/Leads

TA 1

TA 2

TA 3

TA 4

TA 5

TA 6

TA 7

TA 8

TA 9

TA 10

TA 11

CalECSE Exemplar Leads

Interagency Collaboration Exemplar(s) - LEA: East County SELPA - Region 9

Heather Difede & Lucia Garay

Interagency Collaboration Exemplar(s) - Regional Center: San Diego Regional Center - Region 9

Sarah Franco

Assessment Practices Exemplar(s): Piedmont USD - Region 4

Carrie Rodrigues

Preschool Child Find Exemplar(s): Help Me Grow O.C. & First 5 O.C. - Region 9

Rebecca Hernandez & Lisa Burke

Assessment Team Leadership Exemplar(s): Lincoln USD - Region 6

Thomas Crocker

Parent Outreach and Support Exemplar(s): Parents' Place Family Resource Center - Region 11

Camie Poulos

Innovative & Inclusive Preschool Practices Exemplar(s): Sonoma County SELPA - Region 11

Susan Langer

Taylor Smith & Liberty Grammar

&

Bonita USD - Region 11

CalECSE Geographic Technical Assistance Facilitators

Region 1: Del Norte, Humboldt, Mendocino, Sonoma, Lake: Rincon Valley Partnership

Teresa Knapp

Region 2: Siskiyou, Modoc, Trinity, Shasta, Lassen, Tehama, Plumas, Butte, Glenn: Butte County SELPA

Daymi Trowbridge

Region 3: Colusa, Sutter, Yolo, Sacramento, Alpine, El Dorado, Placer, Nevada, Sierra, Yuba: Placer COE

Daniel Mendoza

Region 4: Napa, Solano, Marin, Contra Costa, San Francisco, Alameda, San Mateo: Solano COE

Ilah Feeney

Region 5: Santa Cruz, Santa Clara, San Benito, Monterey: Santa Clara COE

Michelle Kjellesvig

Region 6: Amador, Calaveras, Tuolumne, San Joaquin, Stanislaus: Stanislaus COE

Kristy Mabee

Continued on next slide

CalECSE Geographic Technical Assistance Facilitators Continued

Region 7: Mariposa, Merced, Madera, Fresno, Kings, Tulare: Kings Canyon USD

Freda Kaprielian

Region 8: San Luis Obispo, Kern, Santa Barbara, Ventura: Guadalupe School District

Nathan Moreno

Region 9: Orange, San Diego, Imperial: Imperial County SELPA & Chula Vista USD

Susana Avila Salgado & Jennifer Lopez

Region 10: Mono, Inyo, San Bernardino, Riverside: Riverside County SELPA

Jordan Hulstrom

Region 11: Los Angeles: Whittier Area Cooperative SELPA & Arcadia USD

Paula Miller & Katherine Mahoney

CaIECSE Network

Assessment Team Leadership

Thomas Crocker

**Exemplar Lead, Assessment Team Leadership
Executive Director
Lincoln Unified School District**

Jordan Hulstrom

**Region 10 Technical Assistance Facilitator
Coordinator
Riverside County SELPA**

Freda Kaprielian

**Region 7 Technical Assistance Facilitator
Director of KC KIDS, IFSP- IEP Assessment
Kings Canyon Unified School District**

Katherine Mahoney

**Region 11 Technical Assistance Facilitator
Director of Special Education
Arcadia Unified School District**



Agenda

- ✓ Welcome and Introduction
- ✓ Starting with your Why
- ✓ Improvement Data Center (IDC) Walk through
- ✓ DRDP Outcomes Data Walk through
- ✓ Q & A

Why?

Why is it important to monitor data regularly?

What key data points will you want to review as an administrator supporting Early Childhood Learning Programs?



Jamboard

Data Driven Decision Making

How to Support your Assessment Team and Preschool Programs

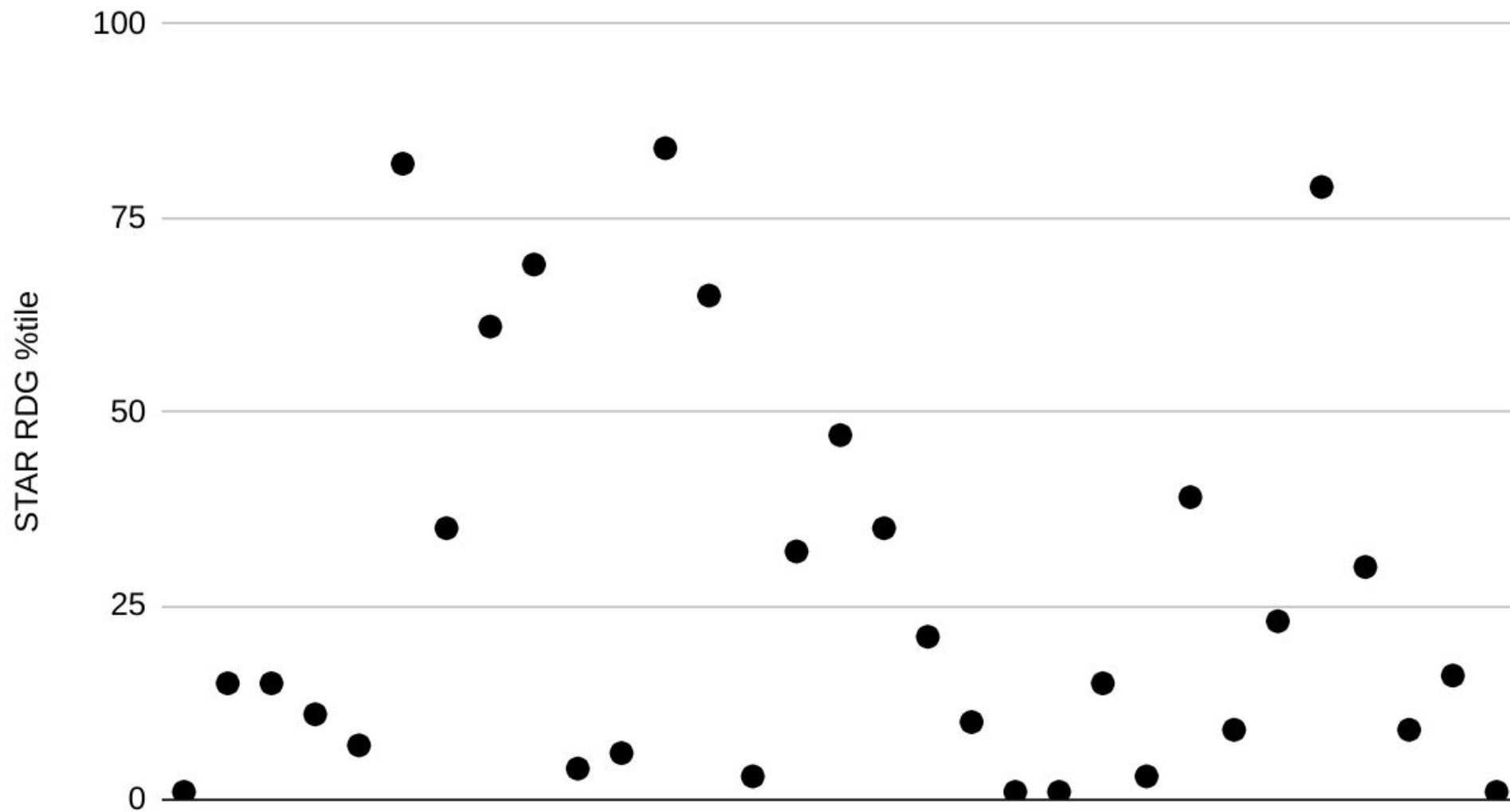
Taking time to reflect on data

Programmatic Review

- How do our decisions regarding preschool programming impact students later in their educational journeys?

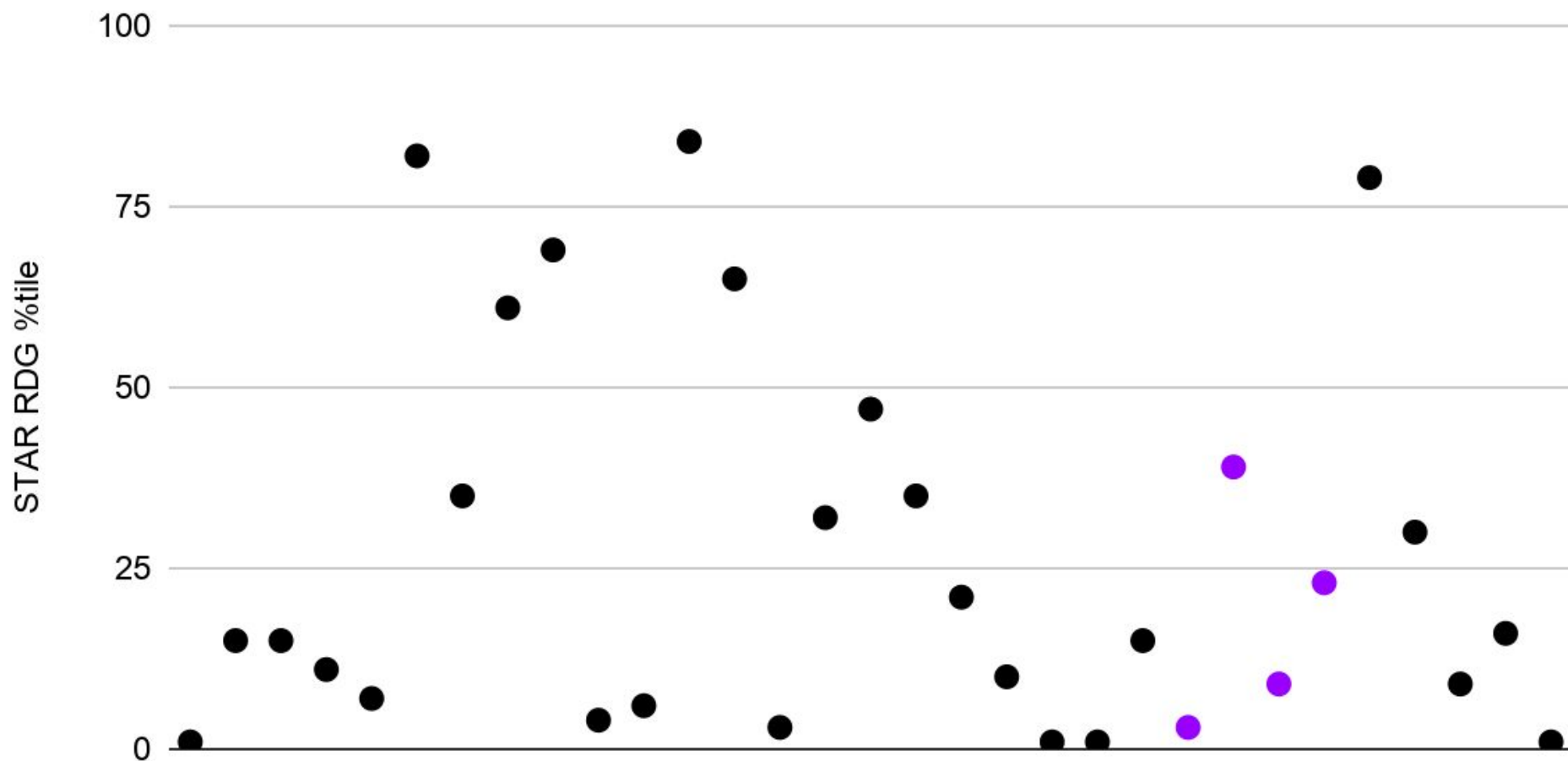


STAR Reading Percentile of 6th graders with IEPs



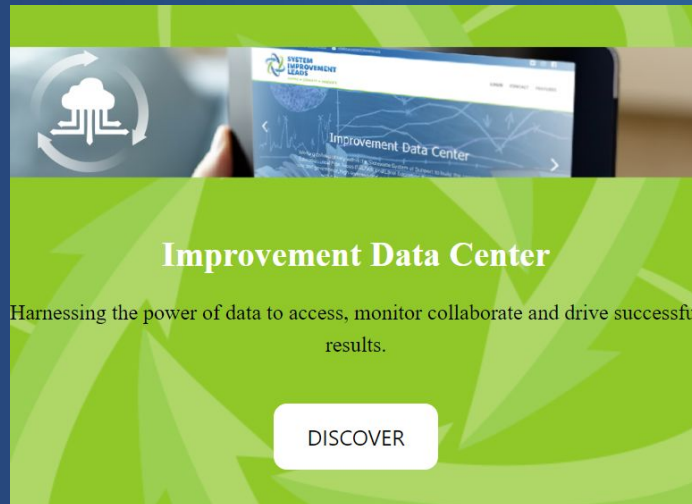
STAR Reading Percentile of 6th graders with IEPs

SDC in Purple



Improvement Data Center

Utilizing Data Historically and In the Moment

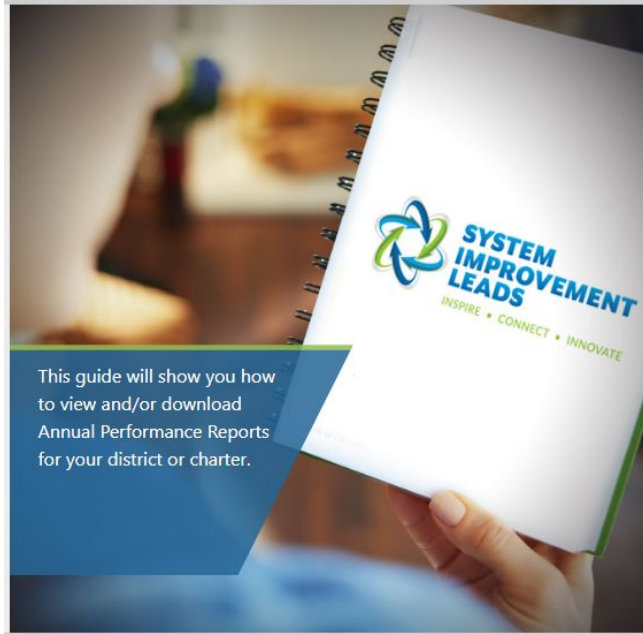
A promotional graphic for the Improvement Data Center. It features a green background with a pattern of overlapping leaf-like shapes. At the top, there is a horizontal strip showing a hand holding a tablet displaying the 'Improvement Data Center' interface. To the left of the tablet is a circular icon with a stylized tree and arrows. Below the tablet, the text 'Improvement Data Center' is written in white. Underneath that, a smaller line of text reads 'Harnessing the power of data to access, monitor collaborate and drive successful results.' At the bottom center, there is a white button with the word 'DISCOVER' in black capital letters.

Improvement Data Center

Harnessing the power of data to access, monitor collaborate and drive successful results.

DISCOVER

DRDP Outcome Data



Improvement Data Center (IDC): Data Tools Visual How-to Guides

The Improvement Data Center (IDC) Data Tools assists SELPAs and LEAs to identify patterns, trends, and data trajectories in order to better understand and monitor State Performance Plan Indicator (SPPI) data. The handouts below will support the user in locating and maximizing the IDC Data Tools Dashboard.

Annual Performance Report Handout 2022

[DOWNLOAD](#)

How to Access APR Reports

[DOWNLOAD](#)

How to locate the Data Tools

[DOWNLOAD](#)

User Profile Authorization and Data Management

[DOWNLOAD](#)

This guide will show you how to view and/or download Annual Performance Reports for your district or charter.

Resources

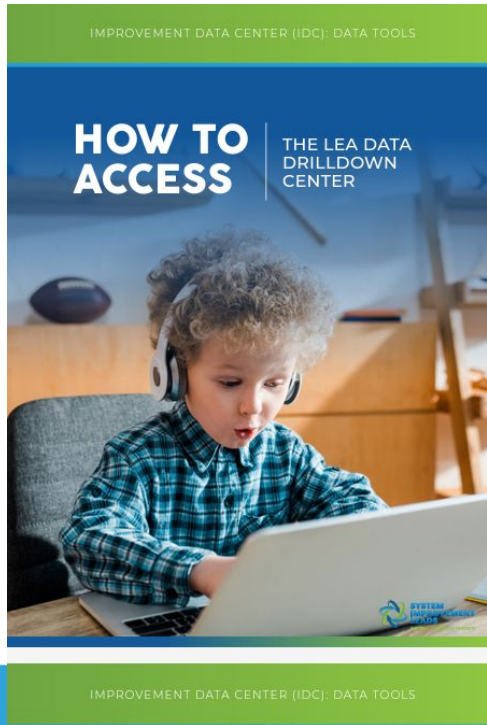
Technical Support



Welcome to the Data



SPPI Dashboard Wall



DR Access Outcomes

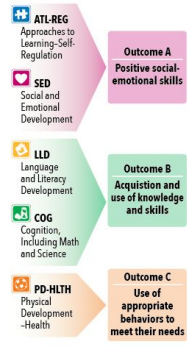
Here you can find your results for "Indicator 7: Child Outcomes". States are required to report annually on child outcomes for all 3, 4, and 5-year-old children with Individualized Education Programs (IEPs) to the Office of Special Education Programs (OSEP) as part of their State Performance Plans.

The Indicator 7 child outcomes are:

- Outcome A: **Positive social-emotional skills** (including social relationships);
- Outcome B: Acquisition and use of **knowledge and skills** (including early language/communication and early literacy); and
- Outcome C: Use of **appropriate behaviors to meet their needs**.

The data for the California child outcomes report comes from the Desired Results Developmental Profile (DRDP), California's early childhood statewide assessment. The DRDP is an observation-based assessment for children birth to five comprised of important areas of learning and development. The figure to the right shows how the DRDP developmental domains aligns to the child outcomes.

On this website, child outcomes results are displayed for children that exited early childhood special education services within the year you specify and include only children with complete DRDP ratings for their entry assessment into early childhood special education and their exit assessment from early childhood special education.



Search Results

Start here to search results



This brief video, *Overview of Indicator 7*, from the California Department of Education, Special Education Division, introduces the Office of Special Education Program's (OSEP) child outcomes indicators and the state and local reports of results available through DR Access Outcomes.

Resources



DRAccessOutcomes.org User's Manual

Contents

Introduction 1
 State Level Results 2
 SELPA Level Results 5
 District Level Results 7

Introduction

Desired Results Access Outcomes (DRAccessOutcomes.org) is a website that provides data reports for Indicator 7: Child Outcomes that are reported on the California Department of Education Special Education Division's State Performance Plan (SPP) to the Office of Special Education Programs (OSEP).



Overview of Indicator 7
Desired Results Access Project



This brief video, *Overview of Indicator 7*, from the California Department of Education, Special Education Division, introduces the Office of Special Education Program's (OSEP) child outcomes indicators and the state and local reports of results available through DR Access Outcomes.



Questions





CALECSE

California Early Childhood
Special Education Network

Thank you for attending!